



## Bathing establishment Fact Sheet

Bathhouse name	BAGNO COMUNALE DA SIMONE
Address	VIA IV NOVEMBRE, 2
City	CINQUALE (MS)
Contacts	+39 338 4239994
Website	<a href="https://www.facebook.com/bagnodasimone/?locale=it_IT">https://www.facebook.com/bagnodasimone/?locale=it_IT</a>

**TESTED BY:** [Handy Superabile - Social Promotion Association](#) in summer 2023

**Please note** The following information refers to the verification date shown at the bottom of each card. **The Association** is not responsible for any significant changes made by the property after the visit.

### Summary

Bathing establishment Fact Sheet .....	1
Arrival at the facility .....	2
Private/public parking.....	2
Pathway from the parking lot to the main entrance .....	2
Reception.....	3
Bar/restaurant .....	4
Internal Pathways and common services.....	5
Internal Pathways .....	5
Toilet and shower accessible to guests with reduced mobility .....	5
Changing room .....	7
Beach.....	8
Children's play area .....	9
Swimming pool .....	9
Doctors' Offices/Healthcare Facilities .....	9

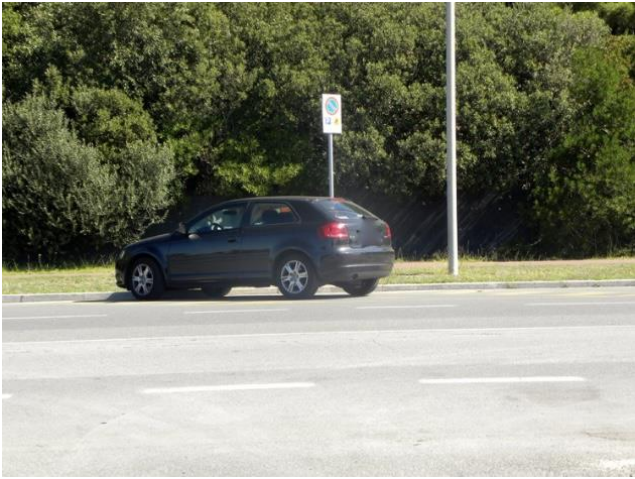

Project carried out with the contribution of the





## Arrival at the facility

### Private/public parking

Presence of private parking	YES
Type of private car park	gravel
Presence of parking space reserved for people with disabilities	YES
Public parking nearby	YES with n.1/2 places reserved for the disabled at approx. 50/100 meters
Type of public car park	asphalt
	

### Pathway from the parking lot to the main entrance

Pathway from the car park to the entrance	From the public car park via connecting ramps from the road surface to the sidewalks. The entrance is accessible on a level level
There are markers and tactile maps	NO
Usable door/entrance width	more than 90 cm

Project carried out with the contribution of the





## Reception

Umbrella booking system	<input type="checkbox"/> Via web <input checked="" type="checkbox"/> By phone <input checked="" type="checkbox"/> On-site
Presence of multilingual staff	YES
Presence of plant plan with key to services available	NO
Presence of visuo-tactile map	NO
Bulletin board/information panels at an average height of 130 cm in a well-lit area and font size at least 14 dpi with a contrast ratio greater than 4.5:1	NO
The staff attended training courses on welcoming people with different disabilities	NO





**Bar/restaurant**

Type of venue	Bar/restaurant
Access to the premises	On the flat, to reach the counter, you need to overcome a small step 2 cm high
Usable door/entrance width	more than 90 cm
Bar counter	more than 100 cm
Types of tables	4-legged and with central support
Space underneath the tables from the floor	Both 65 cm
Multilingual menu	NO
Menus with large print fonts	NO
Braille menu	NO
Table service for people with disabilities	YES
Availability of gluten-free food	<input type="checkbox"/> bread <input type="checkbox"/> pasta <input type="checkbox"/> biscuits <input checked="" type="checkbox"/> ice cream <input type="checkbox"/> Pre-packaged foods





Restaurant bar tables

**Internal Pathways and common services**

**Internal Pathways**

Indicate whether the pathways connecting the entrance to the beach are flat or with ramps in addition to those already described	Obstacle-free paths
--	---------------------

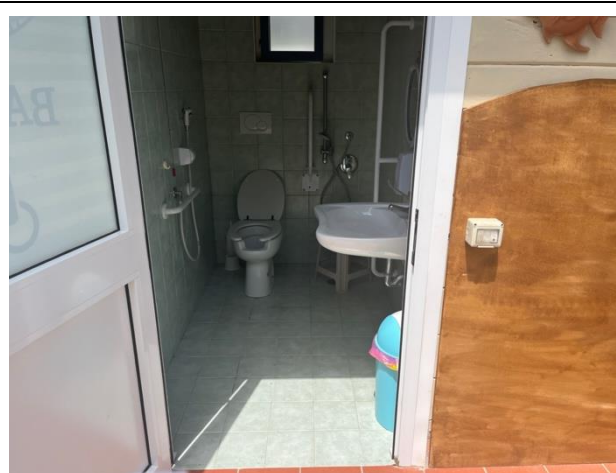
**Toilet and shower accessible to guests with reduced mobility**

Number <b>of toilets</b> accessible/usable by guests with reduced mobility	1
Access to the premises	by ramp length 60 cm, width >90 cm, slope 8%
Usable width of the entrance door	88 cm
Toilet height	42 cm
Open front toilet seat	YES



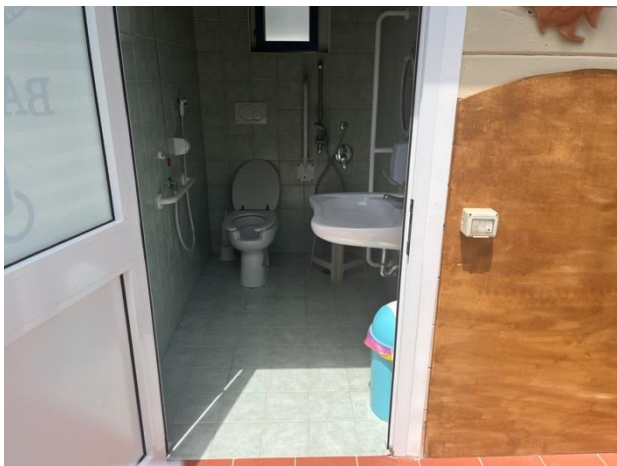


Support handles	on both sides
Flexible hand shower at the side of the toilet	YES
Free space on the sides of the toilet	left more than 90 cm right 25 cm frontal more than 90 cm
Electric doorbell/phone	YES
Washbasin with space underneath for wheelchair	70 cm
Height from the ground on the bottom edge of the mirror	112 cm
Baby changing table	NO





Accessible <b>shower</b> available for guests with reduced mobility	YES in common with the toilet room
Shower type	open-type
Floor-level shower	YES
Shower chair	Stool type without armrests
Grab bar	YES
Presence of shower head or ups and downs	Ups and downs with the lowest point reachable by a seated person
Electric doorbell/phone	YES



### Changing room

Accessible changing room available for guests with reduced mobility	NO
---	----





**Beach**

Type of beach	sand
Access to the beach	Flat
Walkway to reach the umbrellas	YES
Type of walkway	Mixed PVC/cement
Walkway width	>100 cm
	
	Dedicated platform for people with disabilities
Removable Platform between the walkway and the umbrella station to facilitate the passage and parking wheelchair	YES there are 2 tents reserved for the disabled with concrete positions but sunbeds must be rented





---

Amphibious beach chair available for helping people with reduced mobility to enjoy swimming (owned by the establishment or by association)	YES, 2
--	--------

### Children's play area

Children's play area	missing
----------------------	---------

### Swimming pool

The property has a swimming pool	NO
----------------------------------	----

### Doctors' Offices/Healthcare Facilities

Hospitals near the facility	NUOVO OSPEDALE APUANE Via Enrico Mattei, 2 54100 Marina di Massa MS Tel.: +39 05854931
Other Healthcare Facilities	Località Partaccia Via delle Pinete 197/b Marina di Massa Tel.: +39 33581617

TESTED BY: **Handy Superabile Social Promotion Association in summer 2023**

